

Mermaiden

Who says mermaids have to glitter and sparkle? This cozy Mermaiden with her soft, quilted feel is sure to win over even the most die-hard sparkly princess fans. Once you get the hang of the free-motion quilting, Mermaiden sews up quickly. Her hair and fin are flat, quilted fabric without batting, so they're textured but not bulky. Kids love Mermaiden's fun, small size and will want one for every pocket.

FINISHED SIZE

7" tall

PATTERN PIECES (see page 138)

Body (A); Fin (B); Hair Front (C); Hair Back (D)

MATERIALS

6" x 10" scrap of solid-color cotton or flannel for body

12" x 10" (1/4 yd. or fat quarter) corduroy or velvet for hair

12" x 10" (1/4 yd. or fat quarter) cotton print for fin

3"-length of 1/2"-wide rickrack

Matching and coordinating thread

Embroidery floss

Stuffing

STITCHES USED (see pages 125–128)

Ladder stitch, backstitch, edgestitch, tacking stitch.

NOTES

In cutting dimensions, the rectangle's width is always given first, followed by its height.

Unless otherwise noted, all seam allowances are 1/4" and built into the patterns.

1. Trace, Sew, and Cut Out Body

With right sides together, fold the 6" x 10" piece of cotton or flannel, matching up the short sides to get a 6" x 5" piece. Trace the Body (A) on the folded fabric, and sew along the traced line, leaving a 1 1/2" opening at the bottom for turning and stuffing (see diagram). Cut out the body with 1/4" seam allowance. Clip the body's curves (see page 125), turn it right side out, and stuff it (see page 121) so that it's full but still rather flat. Hand-sew the opening closed with a ladder stitch, tucking in the opening's edges as you sew.

2. Embroider Facial Features

Referring to the Basics section on transferring faces to fabric (see page 124) and using the diagram as a guide, embroider the eyes and mouth on the face with three strands of floss and a backstitch. Tie off the floss tails at the back of the head, being careful not to pull them too tightly to prevent denting Mermaiden's face.



WEE WONDERFULS

24 Dolls to Sew and Love

HILLARY LANG PHOTOGRAPHS BY JEN GOTCH

Available wherever books are sold.

find out more at
melaniefalickbooks.com

STC Craft





3. Sew Hair

With right sides together, fold the 12" x 10" piece of corduroy or velvet in half, matching up the short edges to get a 6" x 10" piece. Place the Hair Front (C) and Hair Back (D) on the folded fabric, trace around the patterns, and sew along the traced lines, leaving a 1½" opening at the bottom of the hair back and a ¾" opening at the top of the hair front for turning the pieces (see diagram). Cut the pieces out with a ⅛" seam allowance, but leave a ¼" seam allowance along the openings. Turn the pieces right side out, and press them flat, tucking in the edges at each opening. Edgestitch both pieces with a contrasting thread and, using the diagram as a guide, machine-sew decorative stitching inside the edgestitching.

4. Make Fin Front and Back

With right sides together, fold the 12" x 10" piece of cotton print in half, matching up the short edges to get a 6" x 10" piece. Trace the Fin (B) twice on the folded fabric and sew along the traced lines, leaving a 1½" opening at the side for turning (see diagram). Cut out the fins with a ⅛" seam allowance, but leave a ¼" seam allowance along the openings. Turn the pieces right side out, and press them flat, tucking in the edges at each opening. Edgestitch both pieces with a contrasting thread and, using the diagram as a guide, machine-sew decorative stitching inside the edgestitching.

5. Sew Fins and Hair Together

Align the front fin on top of the back fin with wrong sides together; and, using matching thread and a ladder stitch, hand-sew the outside edges of the pair together, leaving the rounded top open (see diagram). Align the top edge of the hair front and hair back with wrong sides together, and hand-sew the pair together along the top edge with a ladder stitch (see diagram).

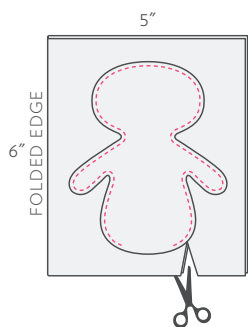
6. Assemble Mermaid

Pull the hair down over the top of the head until it fits snugly. Stuff the bottom of the fin lightly, and pull the fin up over the body until it's snug (see diagram). Using matching thread and a ladder stitch, hand-sew the hair and fin to the body, repeating the stitches until the attached parts are secure.

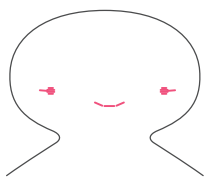
7. Sew Rickrack Flower

Make a rickrack flower by hand-stitching along the bottom curves of a 3"-long piece of rickrack and pulling the thread taut to draw in the rickrack (see diagram). Hand-sew a few tacking stitches to keep the flower in place, and knot off the thread. Hand-sew the flower to Mermaid's hair with a tacking stitch.

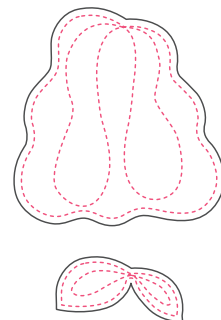
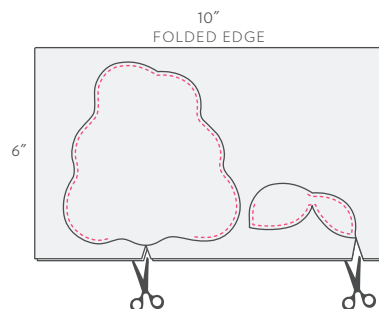
- 1** TRACE, SEW, AND CUT OUT BODY



- 2** EMBROIDER FACIAL FEATURES



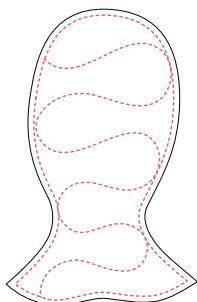
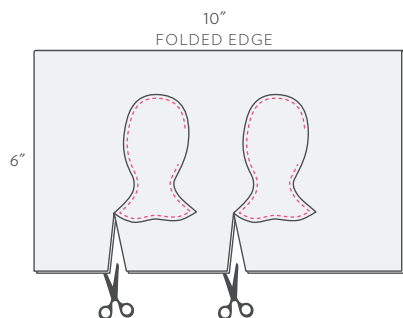
- 3** SEW HAIR, CUT, TURN RIGHT SIDE OUT, AND EMBELLISH WITH STITCHES



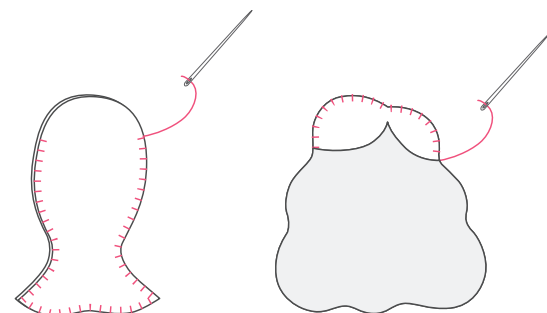
RIGHT
SIDE

WRONG
SIDE

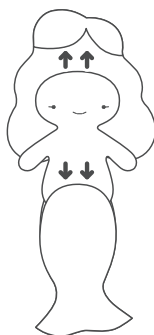
- 4** SEW FIN FRONT AND BACK, CUT, TURN RIGHT SIDE OUT, AND EMBELLISH WITH STITCHES



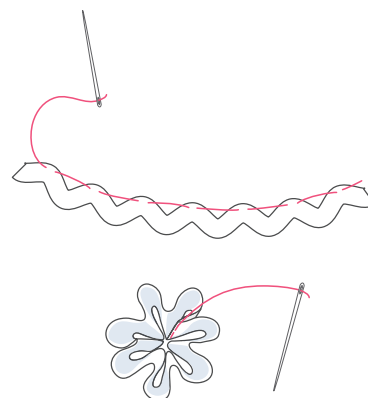
- 5** SEW FINS AND HAIR TOGETHER



- 6** STUFF MERMAIDEN AND ATTACH HAIR AND FIN



- 7** SEW RICKRACK FLOWER FOR HAIR



Mermaid

