

Wee Wonderfals™

FOLKSTER DOLLS

# easter bunny

adaptation for elise & elsa elf



## PRINTING

If you print this PDF at 100% it will print on letter-sized paper (8.5" x 11"), and at this size all the pattern pieces are actual size.

## BUNNY NOSE...

materials needed: 1" square of pink felt and matching pink embroidery floss

1. Cut out 1 of Nose (A) from pink felt.
2. Pin nose and sew in place with a whipstitch and 2 strands of matching floss.
3. Following stitch diagram below embroider mouth with 4 strands of matching floss.

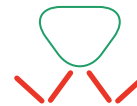


FIG A

## BUNNY EARS...

materials needed: 8" x 6" of body fabric and 8" x 6" of ear lining fabric - preferably something velvety.

1. Cut 2 of Ear (B) from body fabric and 2 from ear lining fabric.
2. With right sides together, sew one ear piece to one lining piece leaving bottom edge open. Repeat for other ear.
3. Turn ears right side out. Fold in bottom ¼" and then fold ear lengthwise into a tuck. Sew a few stitches across the bottom of the ear to hold this all in place. (fig. b)
3. Pin ears to top of head (the cap is already on the head) and sew in place with a ladder stitch and matching thread, repeating stitches until very secure.

## BUNNY'S DRESS...

materials needed: 24" x 12" of lightweight dress fabric and elastic thread

1. Cut 2 of Dress (C) on fold.
2. Finish all edges. Press under  $\frac{1}{4}$ " at arms, bottom hem and neck. Egestitch. (fig. a)
3. With right sides together, sew dress front and back together along one side's shoulder and side seam as shown. (fig. b)
4. Wind bobbin with elastic thread being careful not to stretch thread as you go. With elastic thread in bobbin and regular thread on top, and your machine set on the longest stitch possible, sew 2 lines of stitches across top of dress at neckline and 3 lines of stitches at waist. This will gather the fabric. (fig. c)

If your dress isn't gathered enough spray with water and press with hot steam iron. For more info on sewing with elastic thread see Heather Ross on Martha Stewart...

<http://www.marthastewart.com/article/smocked-sundress>

5. With right sides together, sew dress front and back together along other shoulder and side seam. (fig. c)
6. Slide dress onto bunny.

## BUNNY'S BOW...

materials needed: 24" of  $1\frac{1}{2}$ " wide ribbon.

1. Tie ribbon in big bow in the center. Wrap around bunny's neck and sew in place at back of neck.

□ right side    ■ wrong side



FIG A

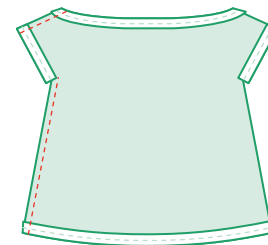


FIG B

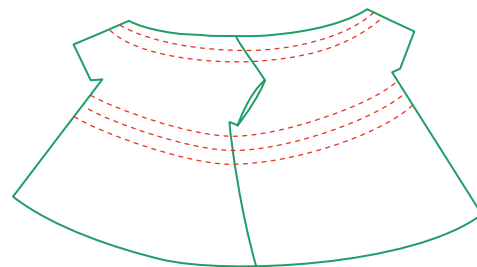
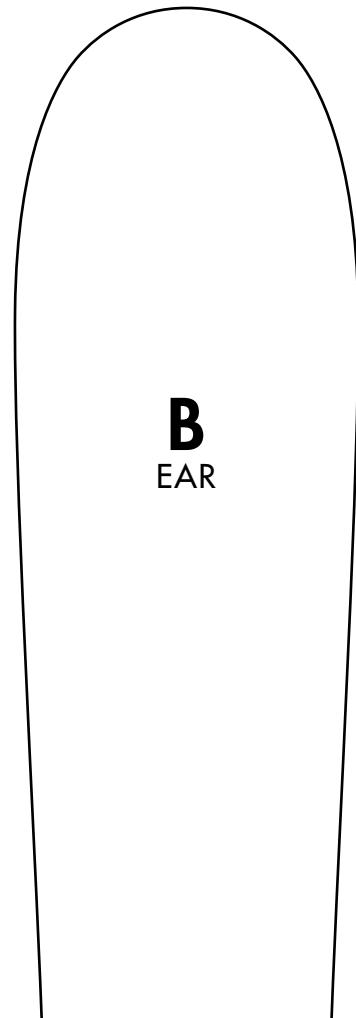


FIG C

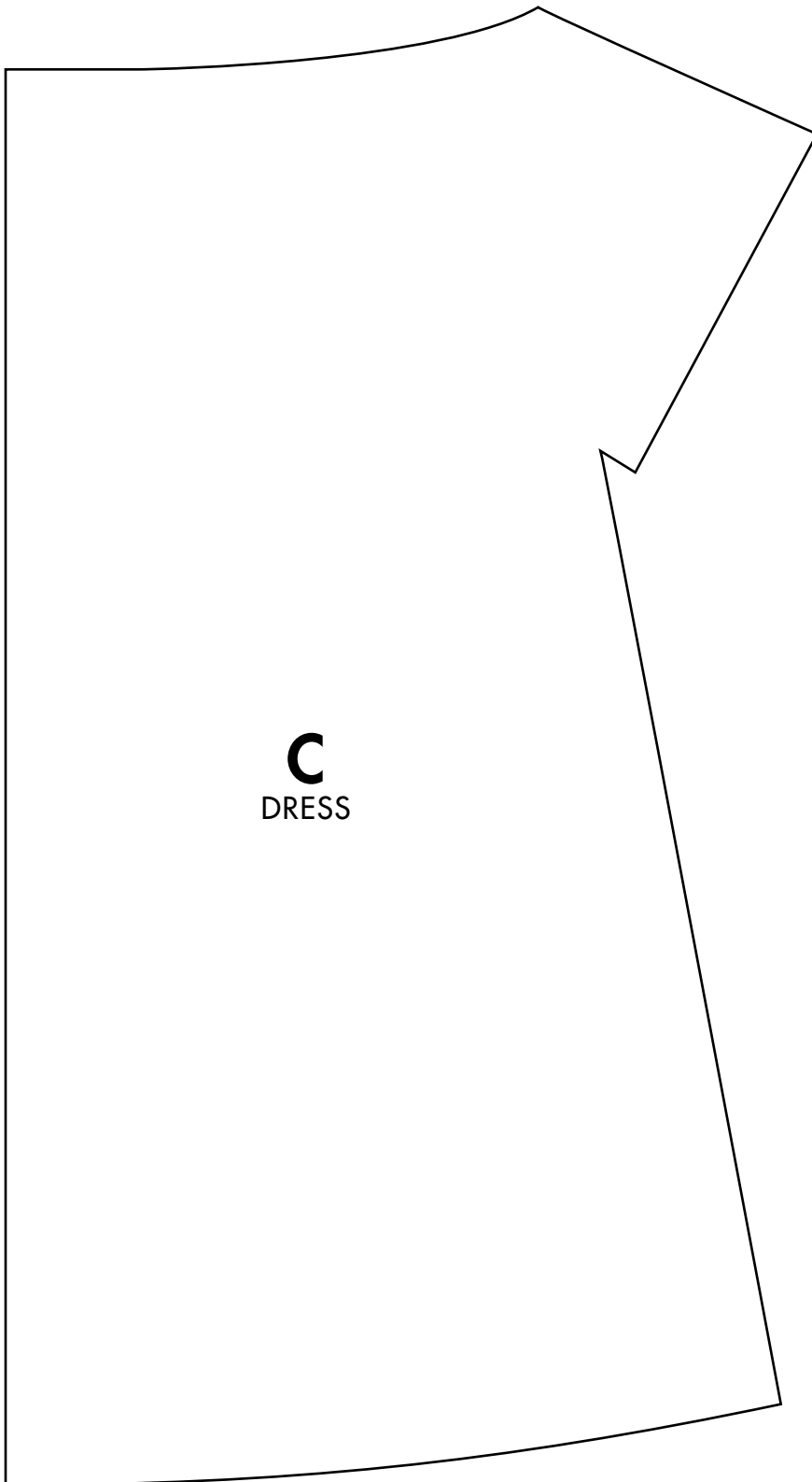
Is your printout sized correctly?  1 in.



**A**  
NOSE



**B**  
EAR



**C**  
DRESS